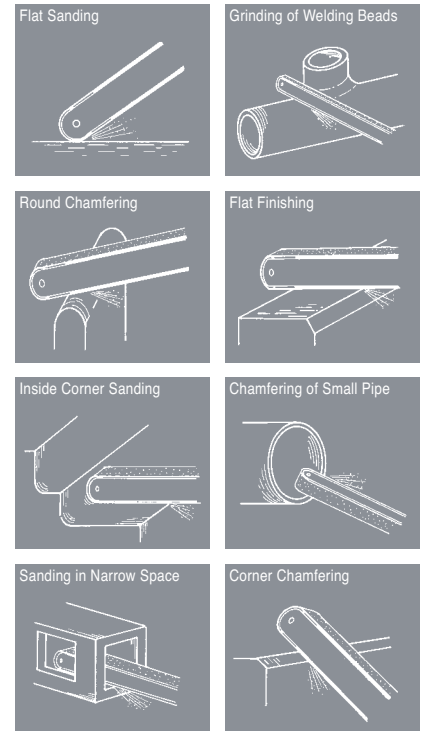


Fuji Belt Sanders are ideal for precise and efficient sanding of confined areas such as spherical surfaces and tubes which are difficult to access with conventional grinders. They are also the ideal tool for de-burring applications. 360 degree head rotation provides versatile solution for almost any application.



Angle Adjustment
(Up to 360 degrees)



Model	Belt Size		Free Speed min ⁻¹	Belt Speed m/min	Power		Overall Length		Height		Weight		Max. Air Consumption		Air Hose Size	
	mm	in			kW	hp	mm	in	mm	in	kg	lb	m ³ /min	ft ³ /min	mm	in
FBS-1-1	10 x 330	13/32 x 12 1/64	20,000	1,200	0.28	0.37	281	11 5/64	124	4 57/64	1.1	2.4	0.57	20.1	9.5	3/8
FBS-1-2	20 x 520	51/64 x 19 1/2	20,000	1,200	0.28	0.37	375	14 25/32	124	4 57/64	1.2	2.6	0.57	20.1	9.5	3/8
FBS-1-3	13 x 460	33/64 x 18 1/8	20,000	1,200	0.28	0.37	345	13 19/32	124	4 57/64	1.2	2.6	0.57	20.1	9.5	3/8
FBS-1-4	20 x 460	51/64 x 18 1/8	20,000	1,200	0.28	0.37	345	13 19/32	124	4 57/64	1.2	2.6	0.57	20.1	9.5	3/8

*Air Inlet Thread Size: BSP or NPT 1/4".

Sanding Belts

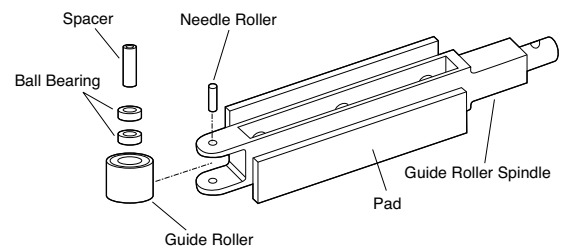


Sanding Belts in different size are able to be mounted to the tool by replacing Contact Arm Ass'y.

Applicable Model	Belt Size (mm)	Grit #40	Grit #60	Grit #80	Grit #100	Grit #120
FBS-1-1	10 x 330	DSB-271	DSB-273	•DSB-274	DSB-275	DSB-276
FBS-1-2	20 x 520	DSB-261	DSB-263	•DSB-264	DSB-265	DSB-266
FBS-1-3	13 x 460	DSB-221	DSB-223	•DSB-224	DSB-225	DSB-226
FBS-1-4	20 x 460	DSB-241	DSB-243	•DSB-244	DSB-245	DSB-246

*Marked • are Standard Accessories.

Contact Arm Assembly



Contact Arm Ass'y	Size	Model
S-169044-00	10 x 330	FBS-1-1
S-169044-01	20 x 520	FBS-1-2
S-169044-02	13 x 460	FBS-1-3
S-169044-03	20 x 460	FBS-1-4