

# Open-end Wrenches

Fuji offers stall torque type Open-end Wrenches for fast, accurate tube nut tightening mainly used in the assembly of hydraulic and pneumatic brake pipes and other hose and cable connections in the car and aircraft assembly lines. Gear driven mechanism without ratcheting provides precise torque, low noise operation and long life service. One hand two-step mechanism simplifies the socket release back to the open position.

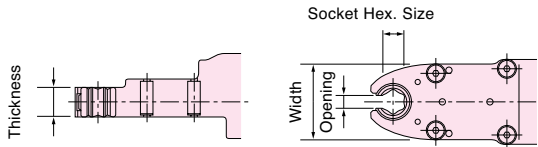


FOW-10-1



FOW-10-2

### HEAD SIZE



### SOCKET SIZE

Model	Socket Hexagon Size (mm)	
	Standard	Other Sizes
FOW-10-1	10	8 · 9 · 3/8"
FOW-10-2	14	10 · 11 · 12 · 13 · 1/2"

\*Specify the socket size in ordering the tool.

Model	Max. Torque			Free Speed	Head Size						Hex. Socket Size (Standard)	Overall Length		Weight		Air Consumption (at Load)		
	N · m	kgf · m	ft · lb		Thickness		Opening		Width			mm	in	kg	lb	m <sup>3</sup> /min	ft <sup>3</sup> /min	
FOW-10-1	13.6	1.4	10.0	410	14	35/64	6	15/64	36	1 27/64	10	25/64	294	11 37/64	1.5	3.3	0.4	14.1
FOW-10-2	18.5	1.9	13.6	300	14	35/64	9	23/64	40	1 37/64	14	35/64	306	12 3/64	1.6	3.5	0.4	14.1

\*Air Inlet Thread Size: BSP or NPT 1/4". \*Air Hose Size: 9.5mm (3/8").

# Ratchet Wrenches

Ratchet Wrenches are used for fastening operations in confined spaces where angle impact tools and nutrunners cannot reach. Reverse operation can be accomplished by simply turning the wrench over.



FRW-6NX-3, -4(A)



FRW-8NX-2, (-2A)

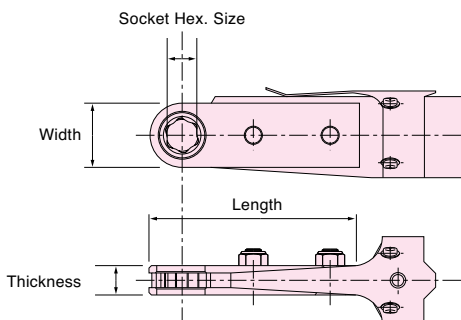


FRW-10N-2



FRW-13N-3,-4

### HEAD SIZE



### SOCKET SIZE

Model	Socket Hexagon Size (mm)	
	Standard	Other Sizes
FRW-6NX-3	10	8 · 8W · 10W
FRW-6NX-3A	10	8
FRW-6NX-4	13	12 · 12W · 13W
FRW-6NX-4A	13	12
FRW-8NX-2	14	10 · 12 · 13 · 1/2" · 9/16" · 10W · 12W · 13W · 14W
FRW-8NX-2A	14	10 · 12 · 13
FRW-10N-2	17	13 · 14 · 16 · 9/16" · 5/8" · 14W · 17W
FRW-13N-3	21	18 · 19 · 19W · 21W
FRW-13N-4	24	22 · 26 · 27 · 22W · 24W · 26W · 27W

\*Specify the socket size in ordering the tool.

Model	Bolt Size	Max. Torque			Free Speed	Hex. Socket Size	Head Size						Overall Length		Weight		Air Consumption (at Load)	
		mm	N · m	kgf · m			ft · lb	mm	Thickness		Width		Length		mm	in	kg	lb
FRW-6NX-3	M6	10.8	1.1	8.1	200	10	13	33/64	20	25/32	88	3 15/32	316	12 7/16	1.2	2.6	0.25	8.8
FRW-6NX-3A	M6	10.8	1.1	8.1	200	10	10	25/64	20	25/32	88	3 15/32	316	12 7/16	1.2	2.6	0.25	8.8
FRW-6NX-4	M6	12.7	1.3	9.4	170	13	13	33/64	24	61/64	93	3 21/32	320	12 9/16	1.2	2.6	0.25	8.8
FRW-6NX-4A	M6	12.7	1.3	9.4	170	13	10	25/64	24	61/64	93	3 21/32	320	12 9/16	1.2	2.6	0.25	8.8
FRW-8NX-2	M8	29.4	3.0	22.1	200	14	18	45/64	25	63/64	108	4 1/4	378	14 57/64	2.2	4.9	0.43	15.2
FRW-8NX-2A	M8	29.4	3.0	22.1	200	14	10	25/64	25	63/64	108	4 1/4	378	14 57/64	2.1	4.6	0.43	15.2
FRW-10N-2	M10	44.1	4.5	33.1	140	17	18	45/64	33	1 19/64	115	4 17/32	417	16 13/32	2.7	6.0	0.58	20.5
FRW-13N-3	M12	58.8	6.0	44.1	130	21	18	45/64	36	1 27/64	116	4 9/16	419	16 1/2	2.7	6.0	0.58	20.5
FRW-13N-4	M12	78.4	8.0	58.8	100	24	18	45/64	46	1 13/64	129	4 5/64	431	16 31/32	3.0	6.6	0.58	20.5

\*Air Inlet Thread Size: BSP or NPT 1/4". \*Air Hose Size: 9.5mm (3/8").