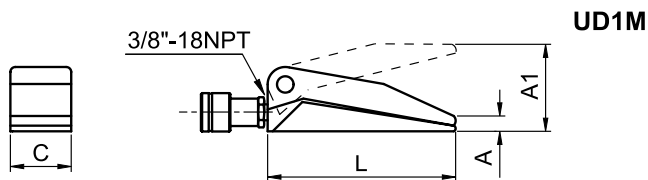
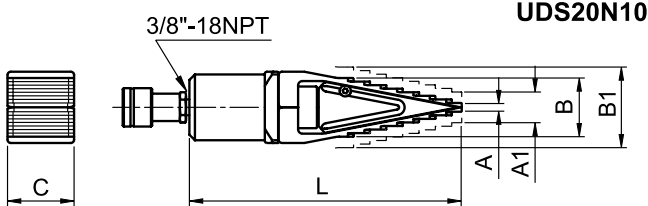
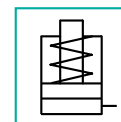


## HYDRAULIC SPREADERS



UD1M



UDS20N10

Force **1 - 20 t**

Max working Pressure: **700 bar**

### FEATURES AND APPLICATIONS

Depending on the model they are ideal for lifting and levelling of machinery, splitting flanges, and for reforming bodywork.

Pistons are spring return on all models and the tool can be ordered in the following versions:

- **Spreader 1 ton capacity (UD1M)**
- **Spreader 20 ton capacity (UDS20N10)**
- **Spreader set** composed of UD1M + hand pump PS100 + hose SN10M (**UD1MC**)
- **Spreader set** composed of UDS20N10 + hand pump PL131 + hose SN10M (**UDS20C**)

Follows our safety instruction.  
See **useful pages.**

**p. 126**



### SELECTION CHART

Force t	MODEL	Dimensions mm						Weight kg
		A	A1	B	B1	L	C	
1	UD1M	14	80	-	-	170	52	3,5
17	UDS20N10	8	18	54	64	246	60	3,7