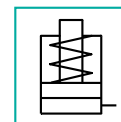
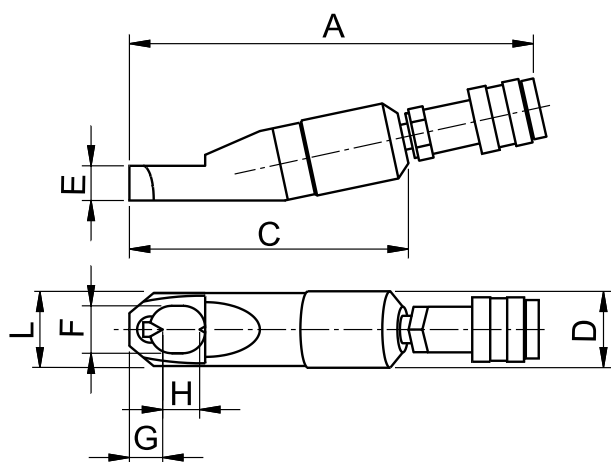


NUT CUTTER



- Force 5 - 50 t
- Nut thread M8 - M39
- Max Working Pressure: 700 bar

FEATURES

US series nut cutters feature **opposed double blades** which permit nut cutting in one single operation (EUROPRESS patented system). This system reduces cutting time and allows operation in confined spaces.

The nuts to be cut may be in high tensile steel with hardness up to 44 HRCHRC.

After cutting, the piston is retracted by spring return.

Worn-out blades may be re-sharpened or replaced.

APPLICATIONS

US nut cutters are designed to cut any nuts that are difficult to remove; they are appropriate for maintenance jobs on pipes and flanges, in the mining, steel structural work and railway sectors, these being a few of the many applications.



Take care when using the cutter to ensure the blade is completely square to the nut to be cut. This will prevent any side loading or damage to the cutter or the blades.

ACCESSORIES

- **US#R** spare blade set

SELECTION CHART

Bolt range	Hexagon nut range	Force	Oil Volume	MODEL	Dimensions mm										Weight
					mm	mm	t	cm ³	A	B	C	D	E	F	
M8÷M12	13÷19	5	12	US1319	218	62	137	42	19	26	18	23	8	40	1,2
M12÷M16	19÷24	11	25	US1924	243	73	161	59	25	34	22	28	12	55	2,3
M16÷M22	24÷32	16	48	US2432	265	78	180	70	30	41	24	36	16	63	3,2
M22÷M27	32÷41	22	72	US3241	304	88	222	84	35	55	28	45	22	78	5,1
M27÷M33	41÷50	32	119	US4150	351	118	283	104	42	70	32,5	54	27	96	10,4
M33÷M39	50÷60	50	220	US5060	403	139	333	124	52	82	38	64	33	118	17,5