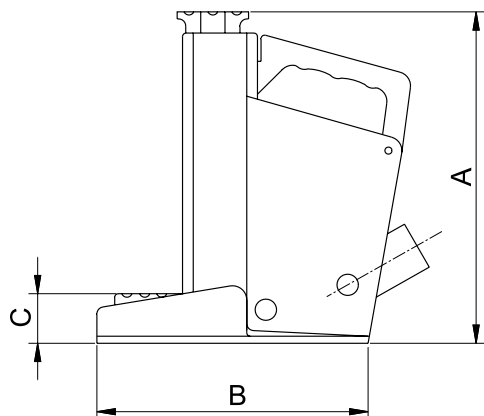


STEEL HYDRAULIC JACKS



Force	5 t
Stroke	175 mm

FEATURES

- **Reduced front profile** which permits the insertion of the jack in very limited load spaces. This jack has a claw height of only 41 mm above ground level for lifting of loads from a very low height
- **The claw is manufactured in high tensile steel** sliding inside the jack and therefore perfectly guided, and with excellent resistance to off-centre loads
- **Will lift 5 Tonnes on the head and on the claw**
- **Lateral stability** is ensured by the sturdy extended base
- **Easy application** This jack is very easy to use, even in heavy duty conditions because of the single mechanism operating both the pump and the release valve
- **Built in relief valve** and a mechanical stop to prevent overstroking of the piston

APPLICATIONS

This jack, designed with a high safety factor to operate in heavy duty conditions, is made from steel without any aluminium components. It is widely used in the machinery moving, mining, ship repair and railway industries.



SELECTION CHART

Pushing force	Maximum load on the claw	Stroke	MODEL	Dimensions mm			Weight	
				A	B	C		Width
t	t	mm						
5	5	175	UMS5N175	327	265	41	118	18