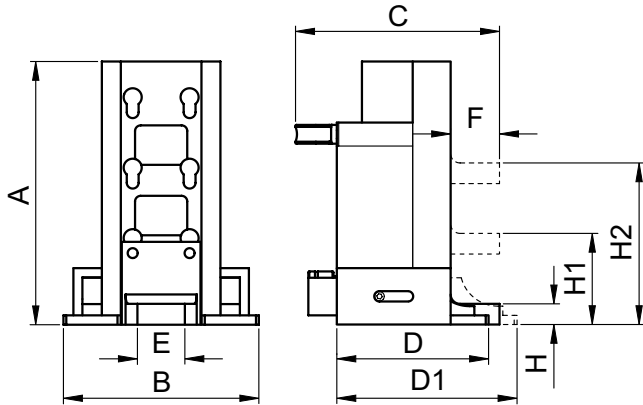


EUROJACK HEAD AND TOE LIFTING JACK



- Force 10 - 25 t
- Stroke 150 mm
- Max Working Pressure: 700 bar



FEATURES

Power jack with adjustable lifting toe designed to lift large loads from very low positions.

They are provided with extendable bases for maximum stability. The lifting toe can be positioned at three different levels with only 25 mm minimum clearance needed. The head of the jack may also be used to lift vertically, or if the jack is turned onto its side it can be used for pushing.

APPLICATIONS

Particularly suitable for lifting, moving and levelling of machinery and heavy equipment from a very low starting height.



Hand Pump model **PL131** is the recommended pump to operate the power jack **UJ** model.



p. 49



SELECTION CHART

Pushing force t / kN	Stroke mm	Oil volume cm ³	MODEL	Dimensions mm										Weight kg
				A	B	C	D	D1	E	F	H	H1	H2	
10 / 111	150	238	UJ10	280	206	215	160	190	50	50	25	100	175	22
25 / 232	150	498	UJ20	314	271	290	230	265	70	70	30	110	190	45