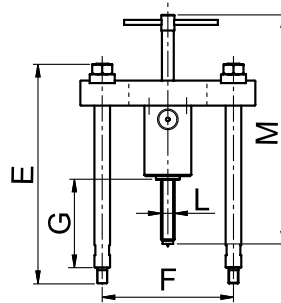


HYDRAULIC PRESS PULLER SETS

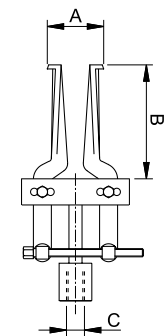


Force **5 - 50 t**

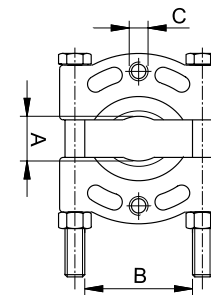
Pullers for specific applications and different tonnes, and for special use may be supplied on request.

SELECTION CHART FOR PRESS PULLERS

| | | MODEL | | | | | | | | | | | | | |
|------------------------|-------|----------|-----|---------------|-----|------------|-----|----------------|-----|------------------|-----|-----|-----|------|--|
| Description | | UET5 | | UET10 | | UET20 | | UET30 | | UET50 | | | | | |
| HYDRAULICS UEU# | Pos. | | | | | | | | | | | | | | |
| Hand pump | 1 | PS100 | | PL131 | | PL141 | | PL141 | | PL162 | | | | | |
| Cylinder | | CMI5N125 | | CMF10N50E | | CMF20N50E | | CMF30N50E | | CMF60N75E | | | | | |
| Hose | | SN20M | | SN20M | | SN20M | | SN20M | | SN20M | | | | | |
| Pressure gauge | | G106L | | G106L | | G106L | | G106L | | G106L | | | | | |
| Max.operating pressure | - | 700 bar | | 560 bar | | 600 bar | | 615 bar | | 580 bar | | | | | |
| MECHANICAL PARTS UET#M | | Pos. | | | | | | | | | | | | | |
| Internal puller | 2 | - | | UEI10 | | UEI20 | | UEI30 | | UEI50 | | | | | |
| External puller | 3 | - | | UEE10 | | UEE20 | | UEE30 | | UEE50 | | | | | |
| Protection saddle | 4 | UETS5 | | UETS10 | | UETS20 | | UETS30 | | UETS50 | | | | | |
| Number of legs | 5 | 2 | 2 | 2 | 2 | 2 | 2 | 2 | 2 | 2 | 2 | 2 | 2 | | |
| Leg length mm | E | 180 | 360 | 209 | 460 | 209 | 336 | 515 | 665 | 328 | 582 | 836 | 820 | 1075 | |
| Maximum reach mm | G | 100 | 280 | -21 | 230 | -56 | 71 | 250 | 400 | 4 | 258 | 512 | 399 | 655 | |
| Minimum spread mm | Fmin. | 82 | | 115 | | 135 | | 180 | | 230 | | | | | |
| Maximum spread mm | Fmax. | 235 | | 260 | | 345 | | 440 | | 580 | | | | | |
| Adjusting screw thread | L | - | | 3/4" - 16 UNF | | 1" - 8 UNC | | 1 1/4" - 7 UNC | | 1 5/8" - 5,5 UNS | | | | | |
| Adjusting screw length | M | - | | 400 | | 670 | | 790 | | 975 | | | | | |
| Weight | kg | 5 | | 13 | | 32 | | 55 | | 115 | | | | | |



Internal puller UEI



External puller UEE

INTERNAL PULLER UEI

| MODEL | Force Pressure | | Dimensions mm | | | | Weight kg |
|-------|----------------|-----|---------------|--------|-----|------------------|-----------|
| | t | bar | A min. | A max. | B | C | |
| UEI10 | 5 | 280 | 40 | 145 | 115 | 3/4" - 16 UNF | 2 |
| UEI20 | 10 | 300 | 32 | 160 | 140 | 1" - 8 UNC | 2,5 |
| UEI30 | 15 | 310 | 60 | 240 | 150 | 1 1/4" - 7 UNC | 6 |
| UEI50 | 25 | 290 | 60 | 240 | 150 | 1 5/8" - 5,5 UNS | 6 |

EXTERNAL PULLER UEE

| MODEL | Force Pressure | | Dimensions mm | | | | Weight kg |
|-------|----------------|-----|---------------|--------|-----|-----------------|-----------|
| | t | bar | A min. | A max. | B | C | |
| UEE10 | 7 | 370 | 10 | 110 | 110 | 5/8" - 18 UNF | 2,5 |
| UEE20 | 13 | 400 | 11 | 134 | 152 | 5/8" - 18 UNF | 5,5 |
| UEE30 | 20 | 410 | 15 | 250 | 260 | 1" - 14 UNF | 25 |
| UEE50 | 33 | 385 | 15 | 250 | 260 | 1 1/4" - 12 UNF | 25 |