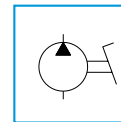


LIGHTWEIGHT ALLOY FOOT PUMPS 700 BAR



Reservoir Capacity	0,24 - 0,5 l
Oil delivery per stroke in HP	2,2 cm ³
Max Pressure	700 bar

FEATURES

This aluminium pump is lightweight simple to use, strong and easy to maintain.

Available in single-stage and double-stage versions to reduce approaching times.

It is equipped with:

- Externally adjustable relief valve
- Steel base plate with antislip pads which may be removed, if the pump is mounted onto a flat surface
- 1/4" NPT gauge port for direct installation of a pressure gauge on the pump head

APPLICATIONS

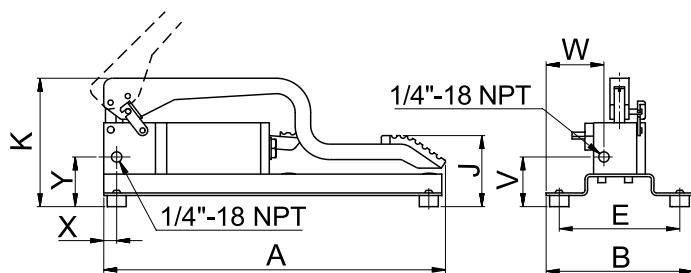
This pump is for use with small tools for folding, drilling and pressing of pipes, and metal sheets.

This pump is recommended when the operator needs to keep his hands free.



OPTION

G version pump with pressure gauge **G106L** directly mounted on pump head (**PF120G**).



STANDARD

1/4" NPT gauge port for direct fitting of the pressure gauge on the pump head.

SELECTION CHART

Pressure 1 st stage	Pressure 2 nd stage	Oil Delivery 1 st stage	Oil Delivery 2 nd stage	Effort on pedal	For use with	Reservoir capacity	Usable oil volume	MODEL	Dimensions mm							Weight kg	
									A	B	J	K	V	X	Y		W
-	700	-	2,2	490	Single acting	0,24	0,19	PF120 PF150	400	200	56-350	155	56	15	56	83	3,5
20	-	10,3	560	0,50		0,40	175					75				4,5	